



In our 61 years, we've built our name on the integrity, performance and hard work of our dedicated employees, who are devoted to providing superior service.

We offer experienced staff, project managers and technicians. Our knowledgeable staff have been a part of our team on many significant projects throughout Kentucky, Tennessee, Illinois and Indiana.

Building Relationships

Since 1963

Experience

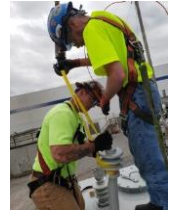
Addresses:
Hopkinsville Office-
 880 North Cherokee Trace
 Blvd.
 Hopkinsville, KY 42240
 270.220.0280

**Sturgis Warehouse
 & Laydown Yard**
 11404 Hwy 60 West
 PO Box 370
 Sturgis, KY 42459

Email:

robertw@whitehead-electric.com
 bhendrix@whitehead-electric.com

- Metalsa, Hopkinsville, KY- Industrial Maintenance
- DanFoss, Hopkinsville, KY- Industrial Maintenance
- Superior Graphite, Hopkinsville, KY- Industrial Maintenance
- Sun Chemical, Hopkinsville, KY- Industrial Maintenance
- T.RAD North America, Hopkinsville, KY - Industrial Maintenance
- Huhtamaki, Hopkinsville, KY- Industrial Maintenance
- SOF Phase 5, Fort Campbell, KY- Construction
- Unmanned Aerial Systems, Fort Campbell, KY- Construction
- Marshall Elementary School, Fort Campbell, KY- Construction
- Air Support Operations Center (ASOC) Expansion, Fort Campbell, KY- Construction



Whitehead Electric Company, Inc. is a HUBZone, Veteran Owned Small Business (VOSB) headquartered in Hopkinsville, KY, specializing in industrial maintenance, general electrical power, and communications contracting. We have been in business since 1963 and provide a wide range of services.

Services

- Equipment Installation
- Facility and Preventative Maintenance
- Manufacturing Lines Relocate
- Design/Build
- Machinery Installation
- Pre Fabrication
- Arc Flash
- Electrical Construction
- Grounding Systems
- Switchboards
- Fiber Optics/Communications
- Fire Alarm Installation
- Security System Installation
- Panelboards
- Motor Control Centers
- PLC Installation and Maintenance
- Heat Trace Installation
- Lighting Retrofits



Quality Statement

Perform work to the exact requirements of our customers, on time and in budget.

